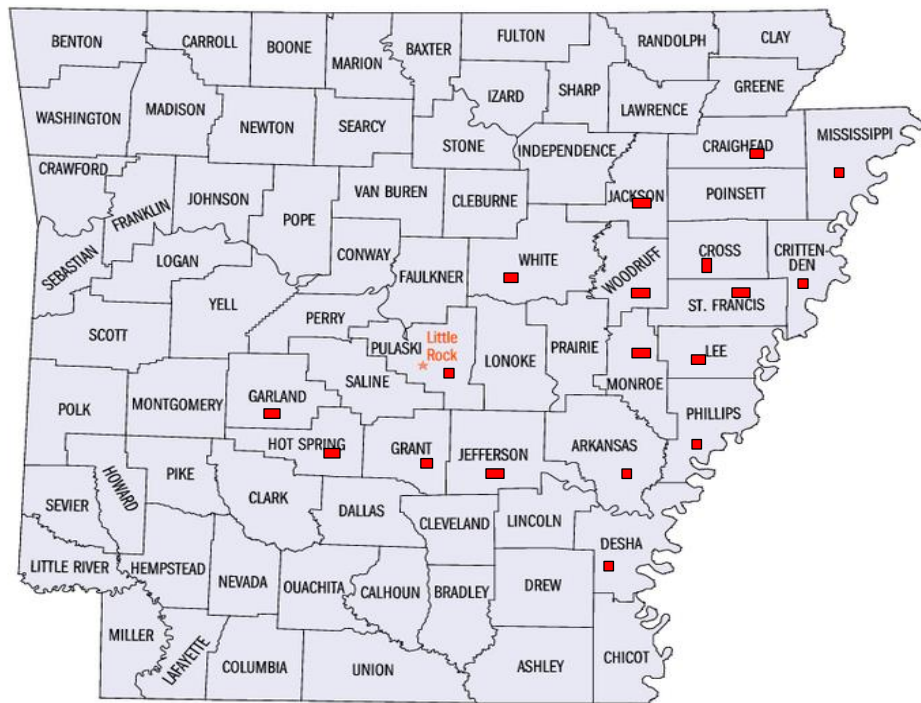




CHANGE COMETH! (AN IMPLEMENTATION OF THE HANNAH PROJECT)



*Greenville, TX not pictured.

*Counties in AR First Jurisdiction

Mother Hazel Deloney
Supervisor
Bishop Jewel Withers, Jr.
Prelate
March 2022-March 2027

Department of Women
First Ecclesiastical Jurisdiction of Arkansas
Church of God in Christ

About this Outreach

How might the Arkansas First Department of Women improve and expand the alignment of our worship and our service toward transforming and sustaining respective communities within the boundaries of the jurisdiction was the question? Seeking a way to become the difference we wanted to see because of the Church of God in Christ presence in the 18 Arkansas counties and the Greenville, Texas District comprising the Arkansas First Jurisdiction was the challenge.

Two objectives provide the foundation for this ministerial initiative: (1) to promote a culture of effective ministry as evidenced by transformational and sustainable programs which are rooted in scriptural inspiration and which motivate, inspire, educate, and activate the participant; (2) to promote a culture of assessment, research, innovation, and engagement. Often the most arduous task is getting started or just assessing the community and deciding on a plan with which to address given concerns. The Hannah Project, available from the International Department of Women, Church of God in Christ, is the guidance of choice.

The purpose of this presentation, *Change Cometh! (An Implementation of the Hannah Project)*, is to set forth our research and programming strategies to address given concerns, influenced by the likes of the six components of the Hannah Project: Job Fair, Financial Literacy, K-12 Academic Success, Teenage Pregnancy Prevention, Second Chance (Re-Entry), and Marriage University. Thank you, Supervisor Barbara McCoo Lewis, Dr. Argatha Gilmore and others for this useful tool.

Arkansas First Department of Women challenges you to be the difference you wish to see in your community ...*to do justly, to love mercy, and to walk humbly with thy God.*

Missionary Eva McGee
Chair, Advisory Board/Hannah Project Steering Committee
Department of Women
First Ecclesiastical Jurisdiction of Arkansas
evam18693hannahproject@gmail.com

CONTRIBUTORS OF THIS PRESENTATION

Advisory Board/Hannah Project Steering Committee

Missionary Eva McGee, Chair
Missionary Minnie Hill, Vice Chair
Missionary Catherine Watson
Missionary Clinton Smith
Missionary Terri Everett
Missionary Kathleen Robinson
Missionary Ora Barnes
Missionary Wilma Watson
Missionary Beverly Vincent
Missionary Dorothy Rolfe

District Missionaries

Missionary Evelyn Smith
Missionary Lynda Williams
Missionary Kathleen Robinson
Missionary Liz Comic
Missionary Wanda Jean Jones
Missionary Carreather Coleman
Missionary Rosie Beard
Missionary Rose Pryor
Missionary Mildred Allen
Missionary Odean Dotson
Missionary Timberly Humphrey (Greenville, TX Contact person)

Liaison Leaders (Jurisdiction Level)

Job Fair - Missionary Jeanette Brooks, Sister Sharon Suen

Teenage Pregnancy Prevention – Evangelist April Agnew

Kingdom Investments/Financial Literacy – Missionary Sherri Woodus Brown

Second Chance (Re-Entry) - Missionary Linda Durden, Missionary Ora Barnes, Sister Frances Young, Sister Cathalene Thigpen

K-12 Academic Success – Missionary Annette Barnes, Sister Rosie Clayton

Marriage University – Missionary Gloretha Smith, Missionary Beverly Vincent

Copyright © 2022 – All Rights Reserved

Contents

About this Outreach	1
Contributors of this Presentation	2
Contents	3
The Problem	4
The Organizational Model	5
Implementation Strategies	
Teenage Pregnancy Prevention	8
Job Fair	11
Kingdom Investments/Financial Literacy	12
K-12 Academic Success	13
Second Chance (Re-Entry)	14
Marriage University	15
Method of Reaching Target Audiences	16
Feedback/Demographics	18
The Launch	18
Component Launch Schedule Across Regions	19

Change Cometh! (An Implementation of the Hannah Project)

CHANGE COMETH! (AN IMPLEMENTATION OF THE HANNAH PROJECT)

THE PROBLEM

To know and understand the problem are important to a resolution of the problem. The research phase of the ministry was influenced by the six components of the Hannah Project which reflect the concerns within the Arkansas First Jurisdiction. Findings from the **Aspire Arkansas*** reflect the following:

- Arkansas ranks highest in the United States in Teen Pregnancy among the 15-19 age group.
- The highest rates of teen pregnancy exist in Phillips, St. Francis, Monroe, and Mississippi counties—all are located within the boundaries of the Arkansas First Jurisdiction
- Phillips County is the poorest in Arkansas: median income \$26,652. One out of every 5.5 persons live in poverty.
- In 2015-19, the median income was about \$47,600, down 4% after adjusting for inflation from two thousand. This was about 76% of the national median income, making Arkansas third to last in the nation on this indicator, just above Mississippi (\$45,100) and West Virginia (\$46,700). Median income was by far the lowest for black or African American households at \$32,100, close to the poverty threshold for a four-person family with two children (about \$26,200).
- Arkansas has one of the youngest average marriage age among states 24.8 years. Arkansas has the highest divorce rate in U. S. 10.7 per one thousand.
- Top reasons for divorce: incompatibility 43%, infidelity 28%, money issues 22%. Average age for first divorce is thirty.
- Achievement levels of students (e.g., performing below average; low levels of achievement in Math, reading, English—requiring costly remedial classes at College and more likely to drop out, causing issues for the student and family and for the institution related to default)
- More than 65% of students qualifying for free lunch in some districts—often a situation from which social ills sometimes manifest, e.g., low self-esteem, marginal family support, lack of aspiration)
- Technology support lacking (pandemic effect on school openings, equipment availability, broadband access, parents unprepared to assist the student at home)
- Parental involvement marginal, if at all, related to student-teacher relations, governance, and administrative)
- Arkansas ranks third (57%) in the United States in prison recidivism according to the Arkansas Department of Corrections. A recent study of individuals incarcerated found that approximately 25% did not have a high school diploma or GED and only 54% were working before their incarceration.

*Provides online, downloadable county-by-county data on indicators for education, health, families, and community.

THE ORGANIZATIONAL MODEL

Upon approval of the Supervisor and the blessings of the Bishop, the women of Arkansas First were introduced to and provided training related to the Hannah Project by way of PowerPoint presentations at the February 2021 Women's Leadership Conference. The projected launch date, identified in the "Plan of Work," is March 2022.

Organizing for efficiency and effectiveness in any initiative is an imperative for success. The Arkansas First Jurisdiction Department of Women chooses a model which positions the District Missionaries as primary Leaders in the execution of this ministry by virtue of their cabinet status with the Supervisor. The model illustrates the relationship of the chair of the steering committee with the International Department of Women (IDOW) Director of the Hannah Project. A relational role is assigned to the Arkansas First Jurisdiction Liaison Leaders with the IDOW component Ministry Experts. The model reflects also that the District Missionaries will team by regions according to the following:

Region 1: Little Rock, Sherwood, Stuttgart, Woodson
Rose Pryor, Little Rock; Gloria Floyd, Sherwood; Kathleen Robinson, Stuttgart.
Liz Comic, Woodson

Region 2: Malvern, Pine Bluff #1, Pine Bluff #2
Carolyn Wilkerson, Malvern; Wanda Jones, Pine Bluff #1; Ida Block, Pine Bluff #2

Region 3: Helena, Forrest City #2
Catherine Watson, Helena; Evelyn Smith, Forrest City #2

Region 4: Wynne, Augusta, Marianna, Forrest City #1
Mildred Allen, Wynne; Odean Dotson, Marianna; Rosie Beard, Forrest City #1.
Augusta (Vacant))

Region 5: West Memphis, Blytheville
Carreather Coleman, West Memphis; Lynda Williams, Blytheville

Region 6 (Texas): Greenville, Texas - Timberly Humphrey Contact person

The Spirit of the Lord is upon me; because the LORD hath anointed me to preach good tidings unto the meek; he hath sent me to bind up the brokenhearted, to proclaim liberty to the captives, and the opening of the prison to them that are bound; Isaiah 61:1

District Missionaries are tasked with the following responsibilities:

- 1) Plan and manage the ministry in respective district and region.
- 2) Identify at least one person as district liaison leader and one person as local liaison leader for each of the six focus areas of the Hannah project: *The Job Fair, Teen Pregnancy Prevention Ministry, Kingdom Investment Strategies—Financial Literacy, Second Chance (Re-entry) Programs for Ex-Offenders, K-12 Academic Support Services, and Marriage University.*
- 3) Request liaison leaders to scan your community for partners (groups or agencies with common goals as the Hannah Project). Also seek to identify the degree to which the challenges exist along with geographical locations within the communities where you might reach into for attracting people who can profit from the ministry of the Hannah project. The leaders also will assist with recordkeeping and reporting.
- 4) Work with the liaison leaders to consider ways to present the implementation of the Ministry that will accomplish the following outcomes: presenting the gospel, demonstrating good works, and participating in the community. (See Manual for ideas).
- 5) Assign a person to serve as the monitor of feedback and demographics data and reporting.

The tasks to be performed by the Liaison Leaders include:

- Scan environment for relevant data
- Discover partners
- Assist with planning and outreach
- Assist with record keeping and reporting
- Other duties as assigned

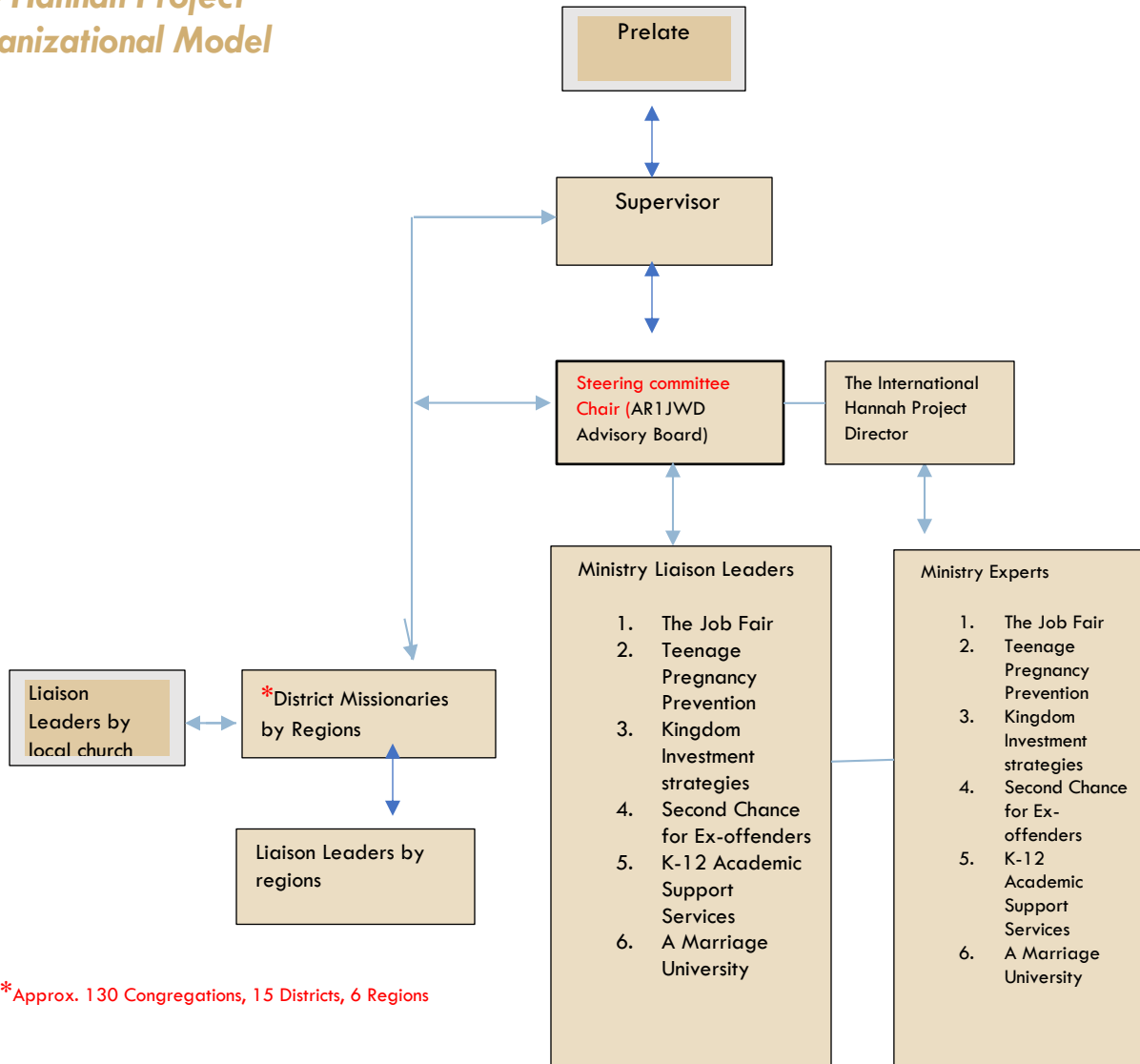
Behold, I am going to send an angel before you to guard you along the way and to bring you into the place which I have prepared. Exodus 23:20

Arkansas First Jurisdiction

Department of Women

The Hannah Project

Organizational Model



*Approx. 130 Congregations, 15 Districts, 6 Regions

Mother Hazel B. Deloney, Supervisor
Bishop Jewel R. Withers, Jr., Prelate

The Advisory Board,
Facilitator, 2021-2022.
09/04/21

"He hath shewed thee, O man, what is good; and what doth the Lord require of thee, but to do justly, and to love mercy, and to walk humbly with thy God." Micah 6:8

IMPLEMENTATION STRATEGIES

Component A: Teenage Pregnancy Prevention*

Submitted by: Carreather Coleman, Lynda Williams

The Problem: Arkansas ranks highest in the U. S. in Teen Pregnancy 15-19 years. Highest rates exist in Phillips, St. Francis, Monroe, and Mississippi Counties which are within the boundaries of Arkansas First Jurisdiction.

Goals

1. Addressing mental health issues (i.e., depression, anxiety, peer pressure and low self-worth) that may arise in teens.
2. Addressing the physical risks of sexual activity.
3. Facilitating open conversations about sex with parent(s) or guardian(s) might have positive effects on preventing teenage pregnancy.

Strategies: (Measurable)

1. Open format meetings with groups of teenagers
2. Distribute Questionnaire which asks teenagers to “strongly agree, agree, disagree, or strongly disagree” with various statements.
 - A. Parents talked freely about sex.
 - B. Sex before marriage is wrong.
 - C. Sex and love are the same.
3. Facilitate open discussions indicating why they agreed or strongly disagreed. Discussion will:
 - A. Target the differences of opinions.
 - B. Facilitate their open and honest ideas about sex.
 - C. Lead-in to discussing pregnancy prevention.

Estimated itemized funding requirements:

Format Meeting
Workshop Material
Professionals Aid
Miscellaneous

Expected Outcomes:

Three percent decline by 2025 as reflected in Arkansas Department of Health data Reports. Eighty percent satisfaction rating by participants on the relevance of the programs and activities to their needs.

*Leaders Training in the Mentoring Process and in Risk Management is recommended.

Component B: Teenage Pregnancy Prevention*

Submitted by: Carreather Coleman, Lynda Williams

The Problem:

Arkansas ranks highest in the U. S. in Teen Pregnancy 15-19 years. Highest rates exist in Phillips, St. Francis, Monroe, and Mississippi Counties which are within the boundaries of Arkansas First Jurisdiction.

Goals

- 1) Educating at least one thousand Youth About Sexual Myths (It is Not Just A Girl Thing!)
 - A. Prevention Methods
 - B. Actual Sex Education
- 2) Sex, Music and The Media
- 3) You are A Gift (Pigs and Pearls) Mentoring Program

Strategies: (Measurable)

1A). Partner with the local school districts to ensure that youth ages 13-19 have access to the appropriate preventive methods. Create a log that will serve as a record for students who access resources. Facilitate workshops for the youth that will address common myths and misconceptions all the while fostering healthy attitudes and awareness of their responsibilities. Participants will complete a self-assessment after each installment.

1B). Partner with the local health facilities to teach bi-monthly classes using relevant resources that will shape viewpoints on sexual activity using the following programs: Egg/Baby Project, Pregnancy Profile Simulator, Real Care Baby Infant Simulator for the purpose of teaching life skills and healthy choices regarding relationships, sexuality, and other related topics. Keep a daily log of infant related experiences in addition to personal growth patterns.

2). Imagery is attractive and sex sells. Develop a weekly podcast called "Dish With The Girls/Dish With The Guys" discussing relevant videos and innovative topics that will challenge our youths' current perspectives on sexuality in the media. Host workshops that address our youths' sex and sexuality across all social media platforms, music, and television. Create a podcast, write a song/rap, produce a video short or design a vision board that shows a healthy and appropriate understanding of sex and sexuality.

3). Targeting ages 13-14, 15-16, and 17-19: Host a series of forums that will involve intense sessions regarding self-worth, self-concept, and inner gifts. Create a project that shows how they recognize their own self-worth, self-concept, and inner gifts.

Materials and Services:

- 1A). Certificate of Completion
- 1B). Participant incentives

Change Cometh! (An Implementation of the Hannah Project)

Expected Outcomes:

Three percent decline by 2025 as reflected in Arkansas Department of Health data Reports. Eighty percent of participants will rate as satisfactory the programs and activities presented.



[This Photo](#) by Unknown Author is licensed under [CC BY-SA](#)

*Leaders Training in the Mentoring Process and in Risk Management is recommended.

Component: Job Fair

Submitted by: Jeanette Brooks, Sharon Suen, Eva McGee

The Problem:

In 2020, the unemployment rate was 6.1%, down from a recent high of 7.9% in 2011 and below the national rate of 8.1%. Madison County (3.9%) and Arkansas County (4.0%) had the lowest rates, while Ashley County (9.3%) and Chicot County (10.3%) had the highest rates.

It is possible to analyze unemployment rates across groups using a different dataset, the Census Bureau's American Community Survey. This data shows that unemployment was a bit more prevalent among men (5.3%) compared to women (5.0%) and among black or African American residents (9.0%) compared to Hispanic (4.5%), white (4.3%) and Asian (2.3%) residents in 2015-19.

Goals:

To promote and encourage the earning opportunities and quality of life for at least 350 persons of the Arkansas First Jurisdiction and the communities within the boundaries of the Jurisdiction.

Strategies:

- 1) Confirm job possibilities via Chambers of Commerce: Legal & Financial, Business & Professional Services, Health Care, Commercial & Industrial, Community & Government, Retail Stores, Construction & Contractors, Personal Transportation, Education, Arts & Entertainment, Travel & Public Transportation, Sports & Recreation.
- 2) Secure a team of volunteers to assist with all aspects of job fair i.e., day before, day of and day after.
- 3) Identify job seekers who will be attending the fair (approx. number of participants)
- 4) Provide prep sessions related to personal presentation, interview skills, and resume preparation/enhancement.
- 5) Send invitations to prospective exhibitors at least 3 to 6 months in advance. Track reply on spreadsheet for easy access.
- 6) Choose date/time and location.
- 7) Create a budget to include location rental (if any), table and chair rentals, tablecloths, audio visual equipment, advertising, after event clean-up, printing costs, banners, refreshments, and paper supplies. Determine the needs of exhibitors through conversation with them.
- 8) Create flyers, posters, local newspapers, social media presentation.
- 9) Determine number of tables and a location flow chart of the exhibitors. Create and display exhibitor signs.
- 10) Do walkthrough i.e., tables, chairs, equipment working correctly.

Materials and Services:

- 1) Site Fees and Set ups
- 2) Welcome/Networking
- 3) Pamphlets, invitations, pads, pencils, media
- 4) Equipment: zoom license, laptop

Expected Outcomes

Eighty percent satisfaction rate of participants related information. 80% percent satisfaction rate of participants related to relevance of recruiters presented. Two percent reduction in the statistics in two years from 2021.

Component: Kingdom Investment Strategies—Financial Literacy

Submitted by: Sherri Woodus, Eva McGee

The Problem:

According to **Aspire Arkansas**, in 2015-19, the median income was about \$47,600, down 4% after adjusting for inflation from two thousand. This was about 76% of the national median income, making Arkansas third to last in the nation on this indicator, just above Mississippi (\$45,100) and West Virginia (\$46,700). Median income was by far the lowest for black or African American households at \$32,100, close to the poverty threshold for a four-person family with two children (about \$26,200). Median incomes were highest among Asian households at \$71,700 and were \$51,300 for white households.

Within the state, median incomes were below \$30,000 in Lee and Phillips counties and above \$60,000 in Saline and Benton counties. A fact is that Phillips County is the poorest in Arkansas and it is within the boundaries of the Arkansas First Jurisdiction.

Goals

1. To engage interested adults across the marital statuses in awareness, education, and action seminars and workshops related to earning, saving, budgeting, banking, borrowing, loan repayment, property (rent or buying), investing, business ownership, protecting your money, and career and employment. Participants will keep journals.
2. To establish partnerships with entities in the community who show common goals.

Strategies: (Measurable)

1. To conduct age-appropriate workshops, educational games, retreats, and seminars quarterly related to financial literacy for at least eighty individuals per region.
2. Provide a zoom license and laptop for three regions to facilitate work with Financial Literacy.

Materials and Services:

- 5) Retreat -
- 6) Guest Presenters
- 7) Pamphlets, paper, pencils, journals
- 8) Equipment: zoom license, laptop

Expected Outcomes:

Eighty percent satisfaction rate of participants related information. 80% percent satisfaction rate of participants related to relevance of topics presented. Two percent reduction in the statistics in two years from 2021.

Component: K-12 Academic Success*

Submitted by: Rosie Clayton, Annette Barnes, Eva McGee

The Problem:

The Arkansas Department of Education website shows, among selected counties in Arkansas, over 80% of schools performing below average. Several issues related to that challenge include marginal parental involvement, achievement levels of students especially in Math, reading and English—requiring costly remedial classes at college and more likely to drop out, causing issues for the student and family and for the institution related to default).

Goals

- 1) To engage the student in activities which foster personal and social development in counties within the Arkansas First boundaries. Students will keep journals.
- 2) To engage the parents in activities which foster awareness, education, and support related to the operations of the selected school systems.
- 3) To establish partnerships with entities in the community who show common goals.

Strategies: (Measurable)

- 1) To conduct age-appropriate workshops, educational games, field trips, and seminars quarterly related to self-esteem, self-respect, anger and hate, the art of compromise, civil behavior, the Bible, personal health and wellness, and career/college readiness to at least seventy-five students per region.
- 2) To adopt a school in respective communities of 130 churches to which the congregation will mentor, advocate to the respective board of education and serve or influence guest speakers upon request of appropriate school personnel.
- 3) Allow fellowship halls of adopting churches to be sites for incidental learning and homework for at least seventy-five students per week.
- 4) Provide a zoom license and laptop for three regions to facilitate work with parents.

Materials and Services:

- 1) Field trip
- 2) Tutors – (secondary & post-secondary youth)
- 3) Pamphlets, paper, pencils, journals
- 4) Equipment: zoom license, laptop

Expected Outcomes:

Three percent improvement each year among 80% of selected schools, as reflected in Arkansas Department of Education data Report. Three percent improvement of parents attendance at school board meetings. Three percent improvement of parents attendance at Parent Teacher Organization meetings. Eighty percent satisfaction rate of students related to social and personal development activities.

*Leaders Training in the Mentoring Process and in Risk Management is recommended.

Component: Second Chance (Re-Entry Programs) For Ex-Offenders

Submitted by: Linda Durden

The Problem:

Arkansas ranks third in recidivism in the U.S. — males at 57.65% and females at 48.21%

More than 620,000 individuals are released from federal and state prisons and millions more exit our local jails. There are more than 110 million criminal history records in state and federal criminal history archives. Because of these records they face social stigma.

Americans who were previously incarcerated face a potential barrier to employment as they tend to have lower levels of education attainment and work experience. A recent study of individuals incarcerated found that approximately 25% did not have a high school diploma or GED and only 54% were working before their incarceration.

More than three out of four, or 83% of individuals released from state prisons will be rearrested within nine years.

Goals:

We envision providing service to one hundred individuals across the jurisdiction.

SECOND Chance focus is on both Probation - The release of an offender from detention, subject to a period of good behavior under supervision and Parole - The release of a prisoner temporarily (for a special purpose) or permanently before the completion of a sentence, on the promise of good behavior.

Primary goals of Second Chance (Re-Entry Programs) For Ex-Offenders:

1. Education -Continuing Education (GED, COLLEGE, TRADES, COMPUTER LITERACY
2. Employment - Life Skills (Applications, Resumes, Presentation and Dressing for Success.
3. Mental Health -focus: Verbal and Physical Abuse, Abandonment, Substance Abuse counseling and assistance.

Strategies:

(1) To partner with congregations, businesses, organizations, and entities that have established ongoing programs.

(2) To employ, use volunteers or paid professional (6) and have workshops, training, and resource sessions for Ex-Offenders.

Expected Outcomes:

Three percent decline of recidivism each year as reflected in Arkansas Department of Corrections data Reports. Eighty percent satisfaction attested to by participants. Eighty percent of participants will rate the teachings and other activities as relevant to their needs.

Component: Marriage University

Submitted by: Gloretha Smith, Eva McGee

The Problem: Arkansas has one of the youngest average marriage age among states, 24.8 years. The state also has the highest divorce rate in the U. S., 10.7 per one thousand. The top reasons for divorce include incompatibility 43%; infidelity 28%; money issues 22%. The average age for first divorce is thirty.

Goals

- 1) To engage interested adults across the statuses in awareness, education, and action seminars and workshops related to the physical, emotional, love, and intimacy connections of marriage. Participants will keep journals.
- 2) To establish partnerships with entities in the community who show common goals.

Strategies: (Measurable)

- 1) To conduct age-appropriate workshops, educational games, retreats, and seminars quarterly related to relationship building and enhancement for at least eighty individuals per region.
- 2) Provide a zoom license and laptop for three regions to facilitate work with marriage university.

Materials and Services:

- 1) Retreat
- 2) Guest Presenters 3
- 3) Pamphlets, paper, pencils, journals
- 4) Equipment: zoom license, laptop

Expected Outcomes:

Eighty percent satisfaction rate of participants related information. 80% percent satisfaction rate of participants related to relevance of topics presented. Two percent reduction in the statistics in two years from 2021.



METHOD OF REACHING TARGET AUDIENCES

Arkansas First will utilize a flyer to reach out to people in the communities identified during the environmental scans and will solicit and encourage partners to join in getting the word out to respective audiences. Partners include Targeted Residents, Mayor, City Council, School administrators and school board members, teachers, PT organizations, Neighborhood Watch groups, Financial leaders—bankers, etc., community organizations (NAACP, sororities, fraternities, etc., Chamber of Commerce), Department of Corrections, local law Enforcement, Religious leaders from all denominations, and others deemed to be relevant to the goal of this ministry.

The Jurisdiction Communications Committee will assist with marketing and tracking programs and activities on the website and all established social platforms.

Prayer in action is love. Love in action is service.

—Mother Teresa (Servant Renown Worldwide)

Arkansas First Ecclesiastical Jurisdiction
Church of God in Christ
Department of Women (AR1JWD)

Mother Hazel B. Deloney, Supervisor
Bishop Jewel R. Withers, Jr., Prelate



The Hannah Project: OPPORTUNITIES

With Purpose on Purpose!

Desired Outcomes

- Present the Gospel
- Demonstrate good Works
- Participate in the community

Meeting information in this space.

- The Job Fair
- A Teen Pregnancy Prevention Ministry
- K-12 Academic Support Services
- Second-Chance (Re-Entry) Programs for Ex-offenders
- Kingdom Investment Strategies-Financial Literacy
- A Marriage University

FEEDBACK AND DEMOGRAPHICS

This feedback will be requested at the end of each session for each component. It may be a google form or a zoom poll.

THE LAUNCH SIMULTANEOUS/VIRTUAL ACROSS ALL REGIONS

Suggested Launch weekend event – Thursday and Friday, March 24, 25, 2022, 6: 30 pm to 8:30 pm; Saturday, March 26, 2022, 10:00 am – 12:00 pm

March 24 – Call to order, Meditation, Greetings/Purpose, Overview of the Ministry via PowerPoint, K-12 Academic support services, Value statements from audience in support of the offerings of this Ministry, Questions & answers, Feedback/Demographics, Announcements & Benediction.

March 25 - Call to order, Meditation, Greetings/Purpose, Panel discussion focusing on youth (*teenage pregnancy prevention*), Second Chance (Re-Entry) for Ex-Offenders, Questions & answers, Feedback/Demographics. Announcements & Benediction.

March 26 - Call to order, Meditation, Greetings/Purpose, Presentation on Investment strategies/financial literacy, Presentation on Marriage University, Questions & answers, Feedback/Demographics, Remarks/Benediction.

Announce meetings following.

As leaders in this time, we must...

- ✓ **Reposition Ourselves**
- ✓ **Review our Inventory**
- ✓ **Recapture Our Purpose**
- ✓ **Reimagine The Future**
- ✓ **Retool Our Skills and Collaborate Our Efforts**
- ✓ **Lean Into the Opportunity**

Bishop Matthew Brown, Pastor Greater Community Church of God in Christ, Marietta, Georgia

AR1 HANNAH PROJECT MINISTRY LAUNCH SCHEDULE

Region/District Missionary	2022-2027	2022-2024	2025-2027
#1 Kathleen Robinson		K-12 Academic Success Financial Literacy Teenage Pregnancy Prevention	Job Fair Second Chance (Re-entry) Marriage
#1 Lizzie Comic		Job Fair Financial Literacy Teenage Pregnancy Prevention	K-12 Academic Success Marriage Second-Chance (Re-Entry)
#1 Gloria Floyd (Estellia Smith, leader)		Financial Literacy K-12 Academic Success Marriage	Job Fair Second Chance (Re-entry) Teenage Pregnancy Prevention
#2 Wanda Jones Ida Block Carolyn Wilkerson	K-12 Academic Success Teenage Pregnancy Prevention Financial Literacy Job Fair Second Chance (Re-entry) Marriage		
#3 Evelyn Smith Catherine Watson		Financial Literacy Teenage Pregnancy Prevention K-12 Academic Success	Second Chance (Re-entry) Marriage Job Fair
#4 Odean Dotson Rosie Beard	Possibility of blending with others in proximity		
#5 Carreather Coleman Lynda Williams	K-12 Academic Success Teenage Pregnancy Prevention Financial Literacy Job Fair Second Chance (Re-entry) Marriage		
#6 T. Humphrey (Greenville, Texas)	Possibility of blending with others		
JOB FAIR Jeanette Brooks Sharon Suen		AR1JWD Convention 2023	AR1JWD Convention 2025

